

UNIVERSAL ROOFING COLDSTORE & CONSTRUCTIONS



...THE EXPERTS ON TOP



EXPERTISE IN

- > ROOFING
- > STRUCTURAL
- > PRE ENGINEERING BUILDINGS
- > COLDSTORE & REFRIGERATION
- > CIVIL CONSTRUCTIONS
- > ALUMINIUM PARTITION



✉ urccmdu@gmail.com

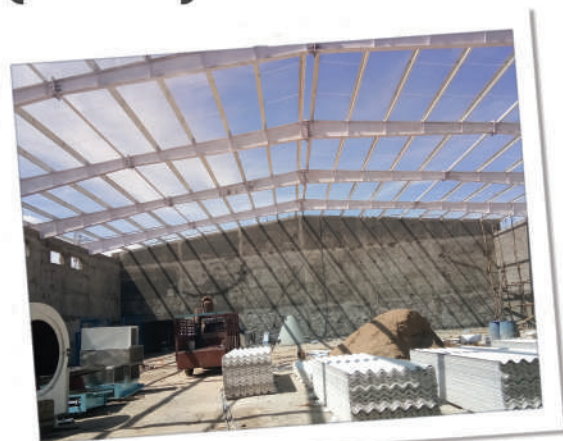
Universal Roofing Coldstore & Constructions offers Design, Supply, Fabrication & Erection of Pre Engineering Buildings (PEB) & Conventional Type Sheds, Roofing, Structural, Coldstore, Refrigeration, Wall & Roof PUF panels. URCC was established in 2010. Within a short span of time, we have built a wide variety of structures and virtually in every type of industry at various locations in India. Timely completion and professional execution are the hallmark of the company. We believe in delivering on our commitments. This is why our clients reward us with so much repeated business over 70% of our projects come from existing clients who have confidence in our ability to meet their expectations without compromising on quality.

PRE ENGINEERING BUILDINGS (P.E.B)

Pre Engineered Steel & Metal Buildings are designed to suit the demand of our customer's. These building are different from conventional buildings in ways like speed in delivery and erection, flexibility in expansion and withstand severe weather conditions. We strive to provide one stop solution for all structure requirements, to do so our product ranges from Mezzanine Floors, Canopies, Portable Cabins, Stairs and Doors Etc. We have been in this field for more than 6 Years and have gained confidence to meet any sophisticated jobs. All structures are designed and manufactured strictly according to ISI specifications ensuring maximum safety and economy by making optimum use of quality raw materials and sheets. Pre Engineered Metal Building is a high level technology, innovation and better product over conventional building.

Over the last few decades pre-engineered steel and metal buildings have become quite popular in the construction industry due to its flexibility, durability and adaptability over. These factors have made steel one of the most sought after materials for building construction

Our customer has large choice for sheet material which can suit their budget as well as requirement such as pre-coated GL sheets, Sandwich Panels(PUF) for the Roof & Wall, Fiber sheets and Polycarbonate sheets. The Pre engineered buildings allows the flexibility to fulfill unlimited range of building configurations, custom design, requirements and applications. The application of this can be in many ways like Industrial Sheds, Warehouse, Showrooms, Sports halls, Auditoriums, Site housing, Cold stores, Poultry Sheds, Green House, Community Halls and Food Courts Etc



FEATURES THAT MAKES PEB INVALUABLE

- * COMPETITIVELY PRICED
- * QUALITY AND INNOVATION ASSURANCE
- * PROVISION FOR EASY FUTURE EXPANSION
- * FASTEST DELIVERY TIME & SPEEDY ERECTION
- * TRANSPORTED IN KNOCK DOWN CONDITION
- * LOW MAINTENANCE COST
- * NO WELDING FACILITY REQUIRED AT SITE
- * RE-LOCATABLE AND RE-WORKABLE
- * ATTRACTIVE MODERN APPEARANCE
- * INSULATED TO SUIT VARIOUS WEATHER CONDITIONS
- * ABILITY TO WITHSTAND SEISMIC FORCES



COLDSTORE

Insulated panels provide solution to the numerous insulation problems occurring in light weight prefabrication. One of the common applications of the insulated panels is the building of cold rooms and refrigerated vehicle bodies. For this application, insulated panels find wide use around the world due to its characteristic to provide maximum thermal insulation. Insulated panels have a monolithic sandwich construction which is formed as a result of injecting rigid polyurethane foam at high density between metal claddings. URCC offers its customers a wide range of cladding materials to choose, depending on their application requirements. URCC built insulated wall, ceiling and floor panels to customer specified sizes that are used in building cold rooms for chiller and freezer applications. Depending on the size and use of the cold room, cold rooms can be broadly classified as walk-in cold rooms and warehouse cold stores. Cold rooms are built by URCC to maintain a temperature range of 15°C to -40°C.



Cold room walls, ceilings and floors are assembled by joining together insulated panels in required lengths. The panels are tightly joined by the slip joint system for good structural stability. Slip joint is a unique, interlocking, tongue-and-groove joint technology which has been adopted across the world and provides unsurpassed sealing and waterproofing. It is a well-organized sandwich panel system which utilizes a male female action on the longitudinal joint to achieve superior tightness and insulation. Panels slip into place allowing for easy and rapid installation, whilst improving structural strength and thermal efficiency and also offering a clean, smooth aesthetic look.

Insulated panels are joined together in required lengths to assemble length to cold room walls, ceilings and floor. The panels are then tightly joined by a tongue and groove system into a monolithic assembly. For joining the panels together camlocks with steel hooks are used to securely lock them together. The camlocks are moulded and permanently anchored in the injected rigid polyurethane foam core during the manufacture of the sandwich panel.

The use of camlocks in connecting the panels makes URCC cold rooms easily expandable as well as dismountable thus allowing easy reassembly at various locations

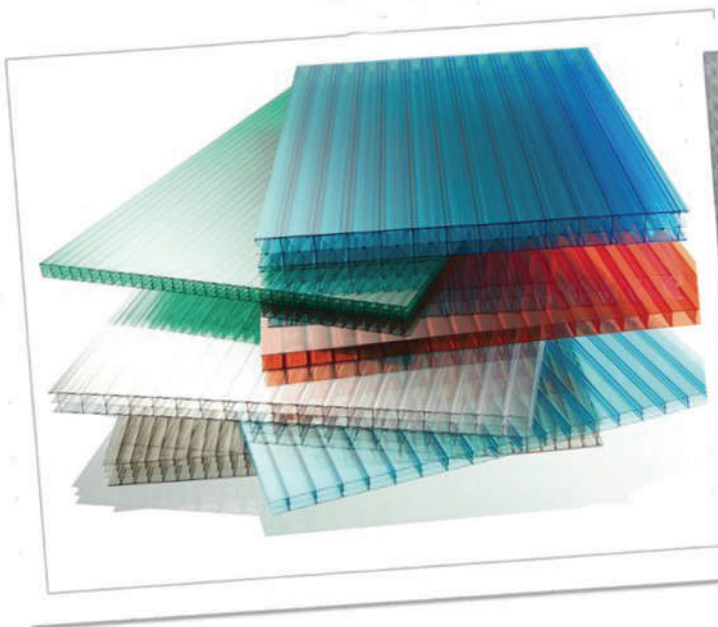
WALL & ROOF PUF PANELS

Backed by our highly skilled and experienced professionals we are engaged in offering our clients with an exclusive range of Wall Puf Panel. Our offered products are tested on our various parameters in order to ensure the quality, strength and durability of the product. Our offered products are light weight and have distinct uses in Industries and households. We identify the actual needs of the customers and then provide the solutions. Clients can easily avail these products at affordable prices. Advantages Of PUF Panels: • Superior Thermal Insulation • Superior Noise Reduction • Lightweight & Easy to Handle • Easy of cutting and shaping • Consistent High Quality Finish • Simple Construction and Assembly



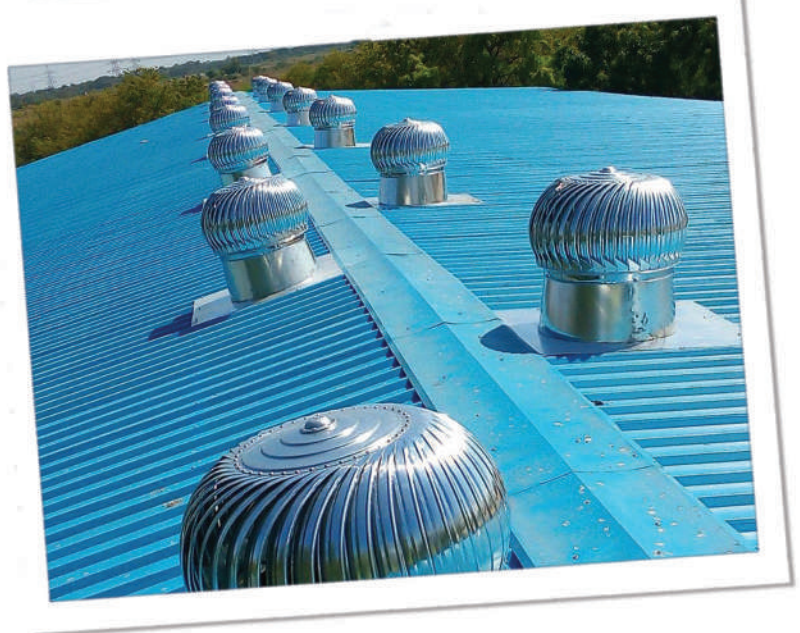
POLYCARBONATE SHEET

Solid sheets combine unbelievable strength, excellent clarity and designing flexibility along with other properties inherent to making it a favorite for numerous Glazing, Roofing and protection Applications over the past decade, PC Sheets offer an extremely high impact resistance (upto 250m times that of glass and 30 times that of acrylic) making it virtually unbreakable. These are rated at an impact energy of >200 Nm and qualify for the highest performance rating for security glazing as per various international standards. PC Sheets allow 40% - 90% (translucent or transparent) light transmission making it perfect for skylight / canopy applications. These sheets made from UV-stabilized resin ensures that the light transmission can be maintained over many years even under direct sunlight. PC Sheets can be installed with a curve under stress. The flexible sheets lend themselves to unique designing for various applications such as skylights, canopies, walkways etc.

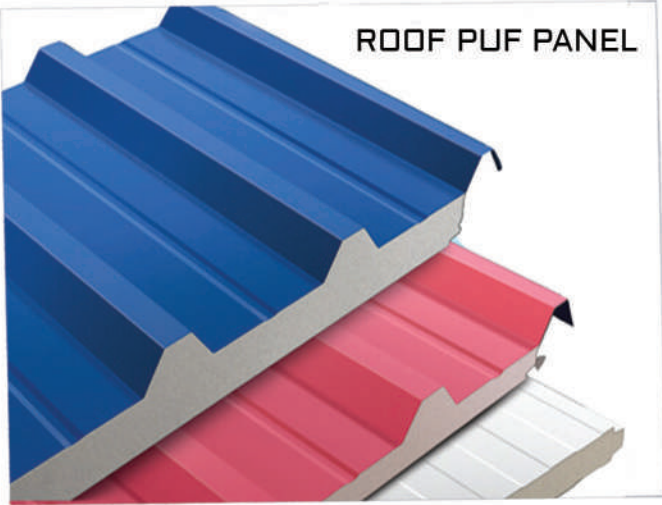


TURBO VENTILATORS

Turbo ventilators are designed and engineered to exhaust industrial pollutants smoke, dust, gases, humidity, heat & many more invisible irritants from the covered area. Turbine ventilators provides a safe, cool, healthier and more controlled environment by removing the entrapped heat & industrial emission ensuring the health of workers, thus contributing to an increase in workers productivity.



ROOF PUF PANEL



WALL PUF PANEL & CORNER PUF PANEL



A TYPE



ONE SIDE SLOPE



P.E.B



COLD ROOM

